

WI-CAMS Printer Quick Reference

October 10, 2017

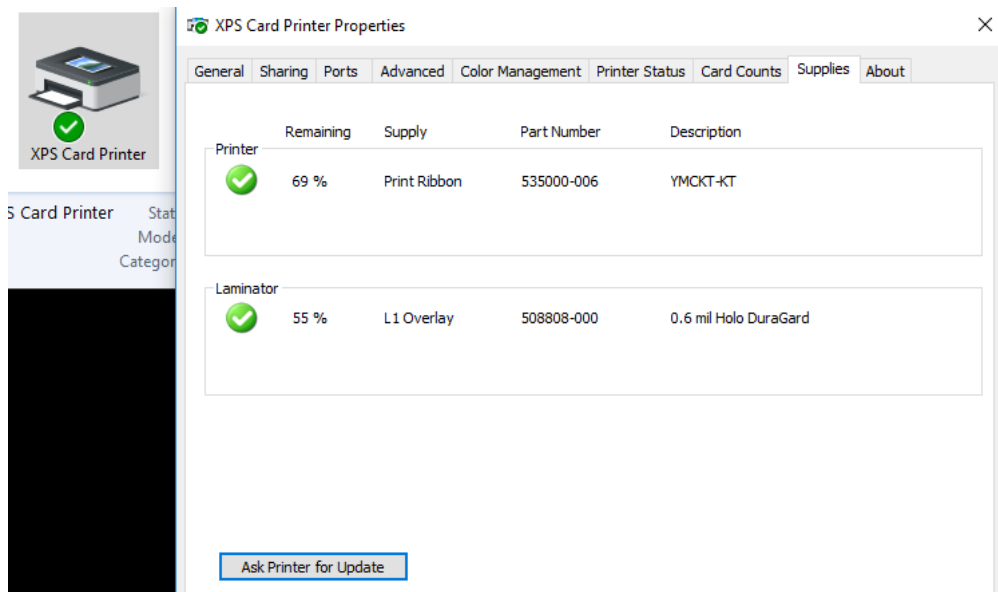


Table of Contents

- Checking printer supply counts..... 3
- Double-sided printing 4
- Turning on/off lamination module 5
- Rotating the laminate’s front side card image 6

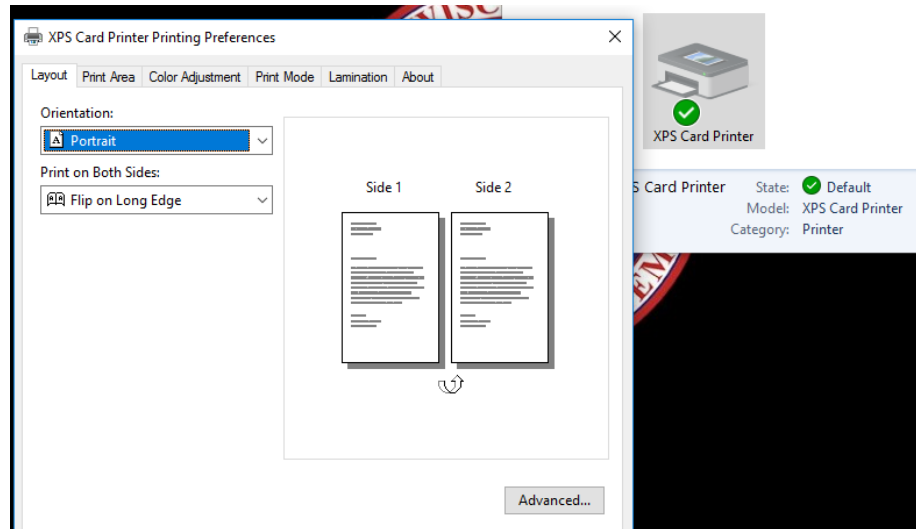
Checking printer supply counts

- a. In Windows, printing agencies can see their DataCard CD800's remaining counts for both the printer and laminator modules. Under "Devices and Printers," right-click the DataCard CD800 printer and select "Printer Properties." (The printer should appear as "XPS Card Printer.")
- b. Click the "Supplies" tab to see the remaining percentages for print ribbon and laminate supplies.



Double-sided printing

- a. If the printer is not printing double-sided ID cards, right-click the printer in “Devices and Printers” in Windows and select “Printing Preferences.” (The printer should appear as “XPS Card Printer.”)

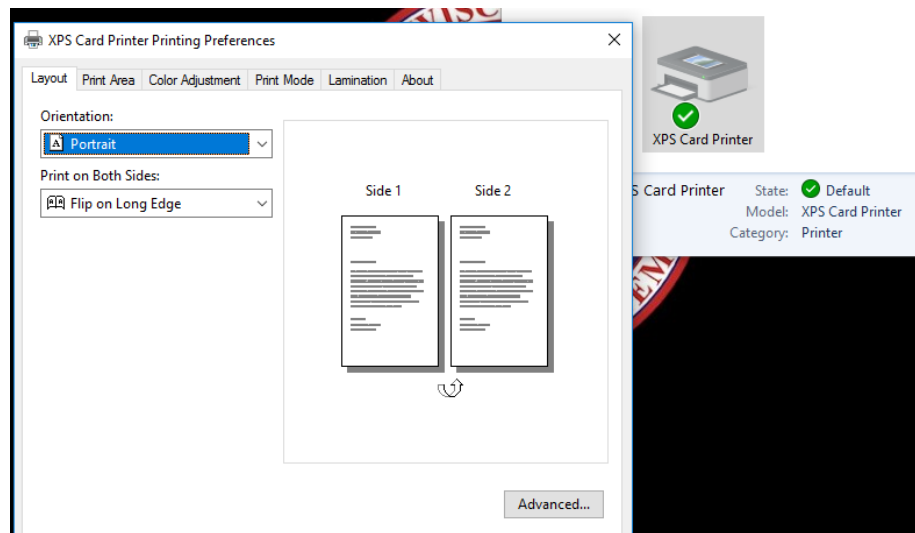


- b. Under the “Layout” tab, ensure that “Flip on Long Edge” has been selected under the “Print on Both Sides” menu dropdown. Click “Apply” and “OK.”

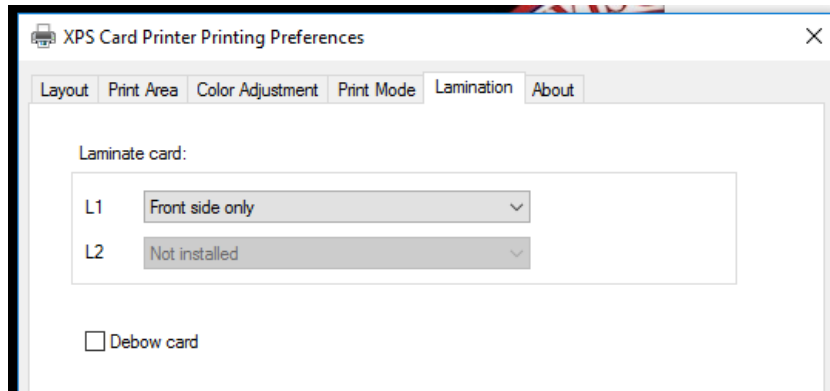
Turning on/off lamination module

Per state policy, all WI-CAMS IDs for field use are required to have holographic laminate affixed to the front side of the card.

- c. To turn on the DataCard CD800's lamination module, right-click the printer in "Devices and Printers" and select "Printing Preferences." (The printer should appear as "XPS Card Printer.")



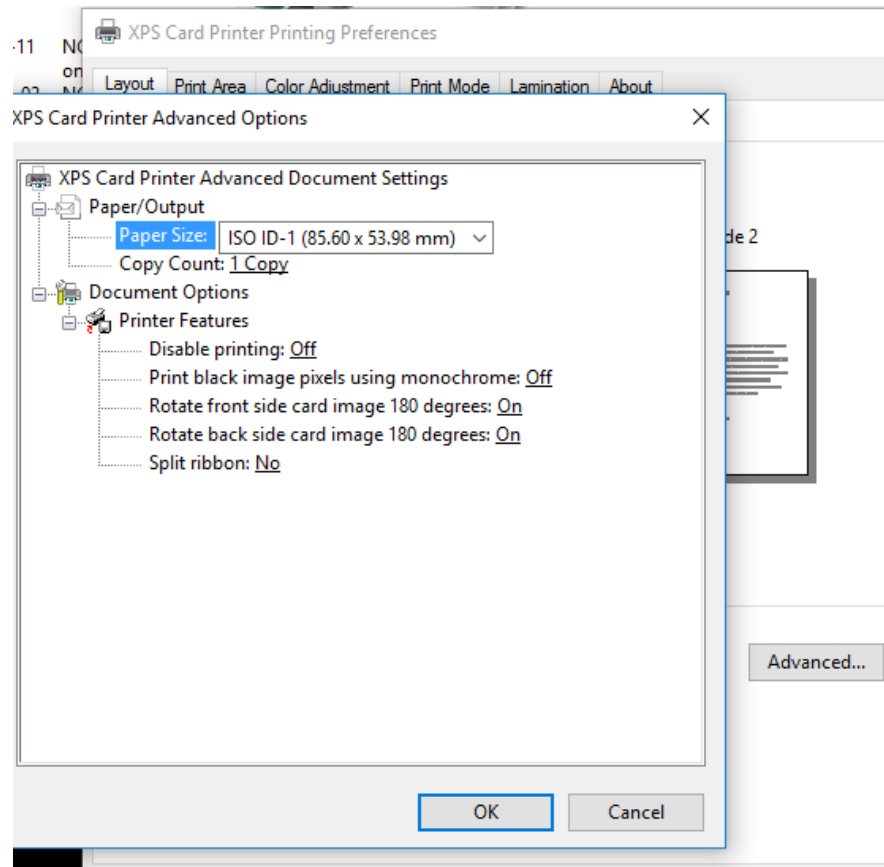
- d. Select the "Lamination" tab. Under "Laminate card," select "Front side only" under the L1 dropdown menu. Click "Apply" and "OK."



- e. Printing agencies may wish to temporarily turn off their laminator when testing printer capabilities or producing credentials for non-response personnel. Repeat steps a & b above but select "Do not apply" under the L1 dropdown menu. Click "Apply" and "OK."

Rotating the laminate's front side card image

- a. On occasion, some DataCard printers will render the holographic image on a credential upside down, with the Wisconsin Emergency Management logo rotated 180 degrees. To reset the rendered image, right-click the printer in "Devices and Printers" and select "Printing Preferences." (The printer should appear as "XPS Card Printer.")
- b. Select the "Layout" tab and then click the "Advanced..." button in the bottom right-hand corner.
- c. Under "Printer Features," find "Rotate front side card image 180 degrees" and toggle this feature to "On." Click "OK."



- d. From the "Printing Preferences" menu, click "Apply" and "OK."